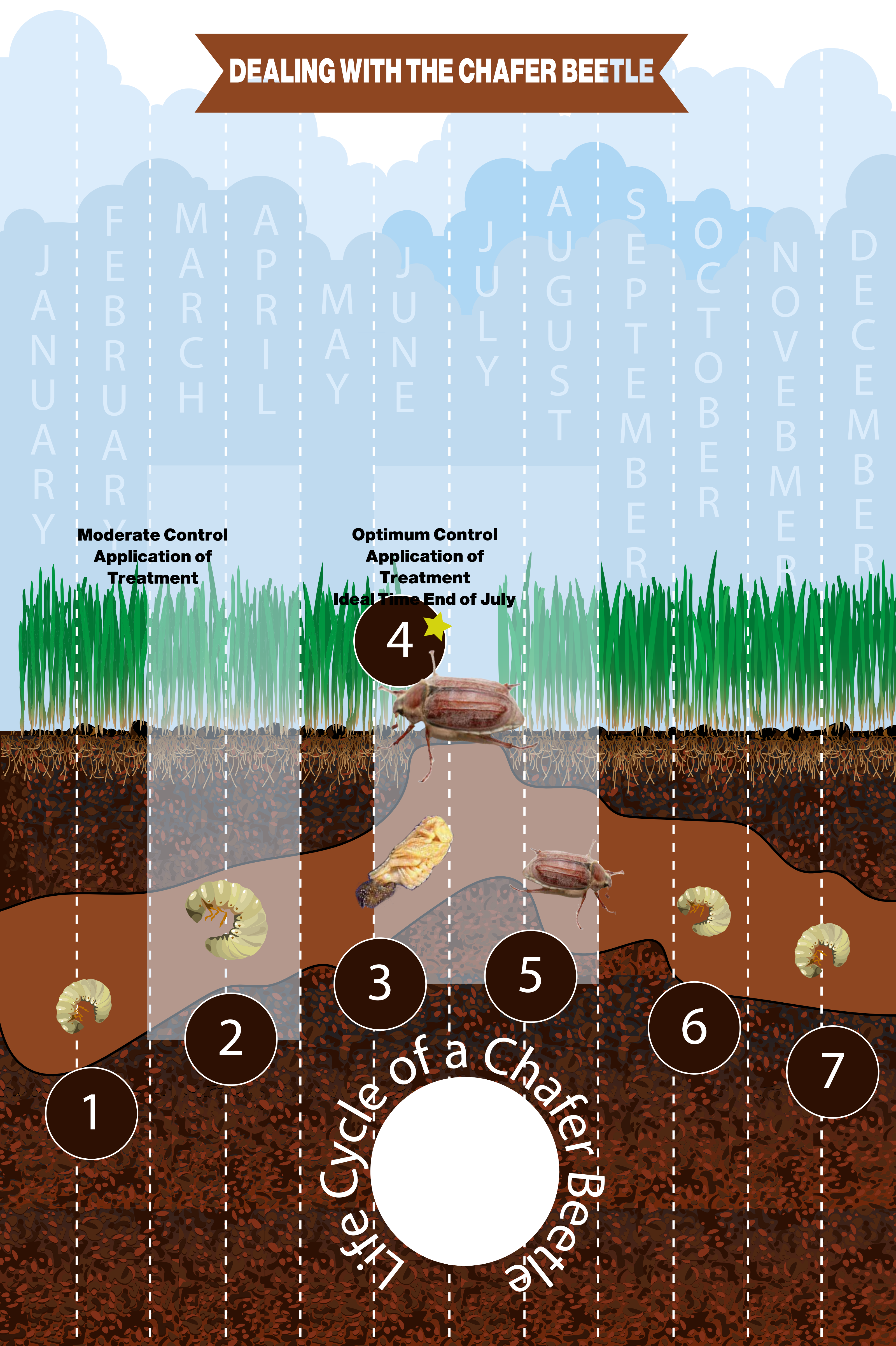


DEALING WITH THE CHAFER BEETLE



1

Grubs are 2-3' below the surface in their protective winter cell

2

Grubs rise to the surface and feed on grass & roots

3

The grub transforms and the pupae forms

4

The Chafer Beetle emerges and starts eating your lawn and garden

5

Chafer beetle lays eggs

6

Eggs hatch and grubs feed on grass & roots

7

Grubs are 2-3' below the surface and return to their protective winter cell

For more great articles and info on Terraseeding™, soil, and mulch visit:

www.DENBOW.com